

<p style="font-size: 1.2em; font-weight: bold; margin-bottom: 10px;">CTKD12N10</p> <p>100V N-Channel MOSFET</p> <p>Features:</p> <ul style="list-style-type: none"> <input type="checkbox"/> Low Intrinsic Capacitances. <input type="checkbox"/> Excellent Switching Characteristics. <input type="checkbox"/> Extended Safe Operating Area. <input type="checkbox"/> Unrivalled Gate Charge :Qg= 12.5nC (Typ.) <input type="checkbox"/> BVDSS= 100V, I_D= 12A <input type="checkbox"/> R_{DS(on)} : 0.14Ω (Max) @V_G=10V <input type="checkbox"/> 100% Avalanche Tested 	<p style="text-align: center; font-weight: bold; margin-bottom: 10px;">TO-252</p> <div style="text-align: center;"> </div> <div style="margin-top: 10px;"> <p>1. Gate (G)</p> <p>2. Drain (D)</p> <p>3. Source (S)</p> </div>
--	---

Absolute Maximum Ratings* (T_c=25°C Unless otherwise noted)

Parameter	Symbol	Limit	Unit
Drain-Source Voltage	V _{DS}	100	V
Gate-Source Voltage	V _{GS}	±20	V
Drain Current-Continuous	I _D	12	A
Drain Current-Continuous(T _c =100°C)	I _D (100°C)	6.5	A
Pulsed Drain Current	I _{DM}	58	A
Maximum Power Dissipation	P _D	30	W
Derating factor		0.24	W/°C
Single pulse avalanche energy (Note 5)	E _{AS}	150	mJ
Operating Junction and Storage Temperature Range	T _J , T _{STG}	-55 To 150	°C

Thermal Characteristics

Thermal Resistance, Junction-to-Case(Note 2)	R _{θJC}	4.17	°C/W
--	------------------	------	------

Electrical Characteristics (T_c=25°C unless otherwise noted)

Parameter	Symbol	Condition	Min	Typ	Max	Unit
Off Characteristics						
Drain-Source Breakdown Voltage	BV _{DSS}	V _{GS} =0V I _D =250μA	100	110	-	V
Zero Gate Voltage Drain Current	I _{DSS}	V _{DS} =100V, V _{GS} =0V	-	-	1	μA
Gate-Body Leakage Current	I _{GSS}	V _{GS} =±20V, V _{DS} =0V	-	-	±100	nA
On Characteristics (Note 3)						
Gate Threshold Voltage	V _{GS(th)}	V _{DS} =V _{GS} , I _D =250μA	1.2	1.8	2.5	V
Drain-Source On-State Resistance	R _{DS(ON)}	V _{GS} =10V, I _D =5A	-	105	140	mΩ
Forward Transconductance	g _{FS}	V _{DS} =25V, I _D =6A	3.5	-	-	S
Dynamic Characteristics (Note4)						
Input Capacitance	C _{iss}	V _{DS} =25V, V _{GS} =0V, F=1.0MHz	-	690	-	PF
Output Capacitance	C _{oss}		-	120	-	PF
Reverse Transfer Capacitance	C _{rss}		-	90	-	PF
Switching Characteristics (Note 4)						
Turn-on Delay Time	t _{d(on)}	V _{DD} =30V, I _D =2A, R _L =15Ω V _{GS} =10V, R _G =2.5Ω	-	11	-	nS
Turn-on Rise Time	t _r		-	7.4	-	nS
Turn-Off Delay Time	t _{d(off)}		-	35	-	nS
Turn-Off Fall Time	t _f		-	9.1	-	nS
Total Gate Charge	Q _g	V _{DS} =30V, I _D =3A, V _{GS} =10V	-	15.5	-	nC
Gate-Source Charge	Q _{gs}		-	3.2	-	nC
Gate-Drain Charge	Q _{gd}		-	4.7	-	nC
Drain-Source Diode Characteristics						
Diode Forward Voltage (Note 3)	V _{SD}	V _{GS} =0V, I _S =9A	-	-	1.2	V
Diode Forward Current (Note 2)	I _S		-	-	15	A
Reverse Recovery Time	t _{rr}	T _J = 25°C, I _F =6A di/dt = 100A/μs(Note3)	-	21	-	nS
Reverse Recovery Charge	Q _{rr}		-	97	-	nC
Forward Turn-On Time	t _{on}	Intrinsic turn-on time is negligible (turn-on is dominated by LS+LD)				

Notes:

1. Repetitive Rating: Pulse width limited by maximum junction temperature.
2. Surface Mounted on FR4 Board, t ≤ 10 sec.
3. Pulse Test: Pulse Width ≤ 300 μs, Duty Cycle ≤ 2%.
4. Guaranteed by design, not subject to production
5. EAS condition: T_j=25°C, V_{DD}=50V, V_G=10V, L=0.5mH, R_g=25Ω

Typical Characteristics

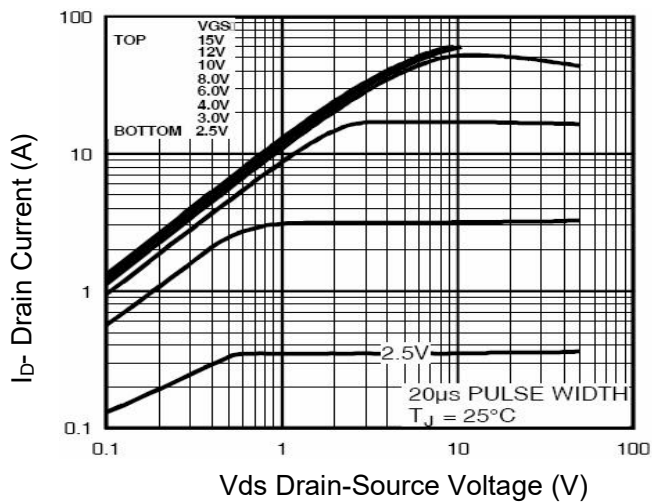


Figure 1 Output Characteristics

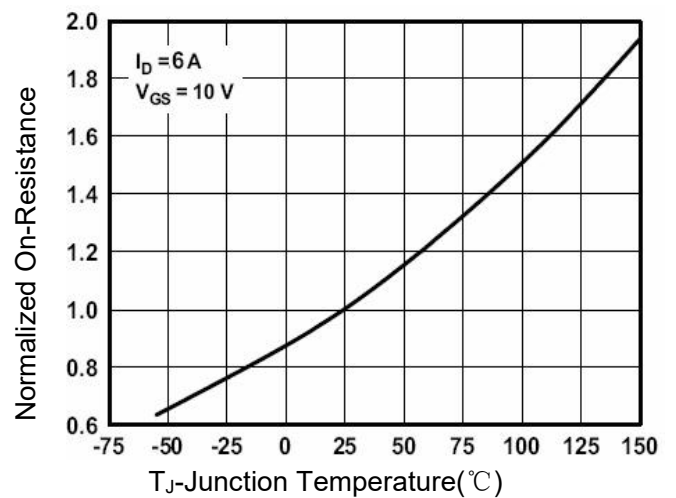


Figure 4 R_{dson}-Junction Temperature

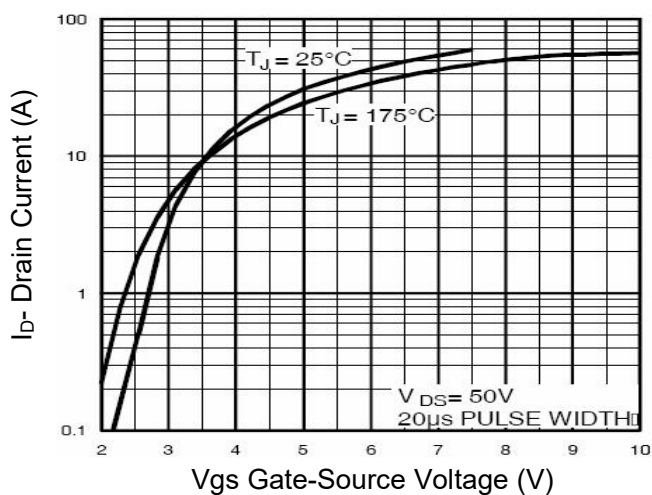


Figure 2 Transfer Characteristics

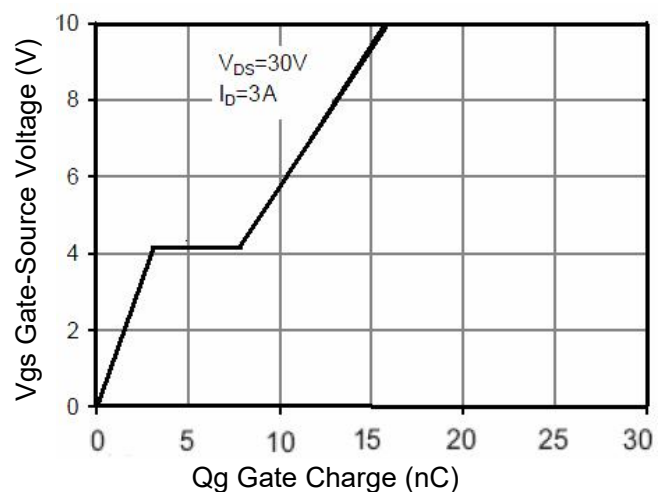


Figure 5 Gate Charge

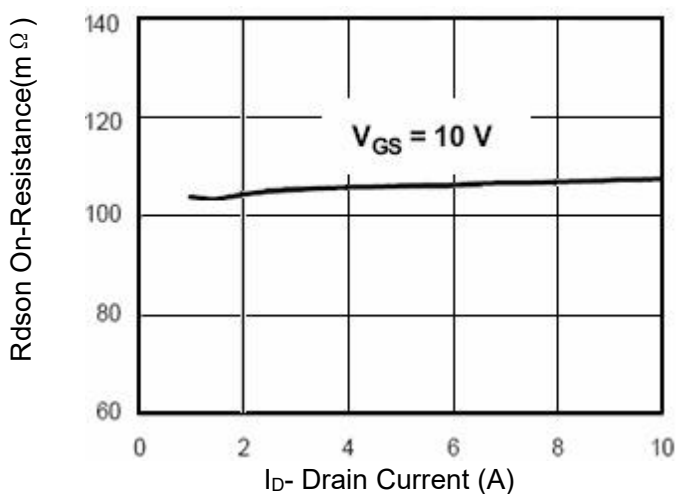


Figure 3 R_{dson}- Drain Current

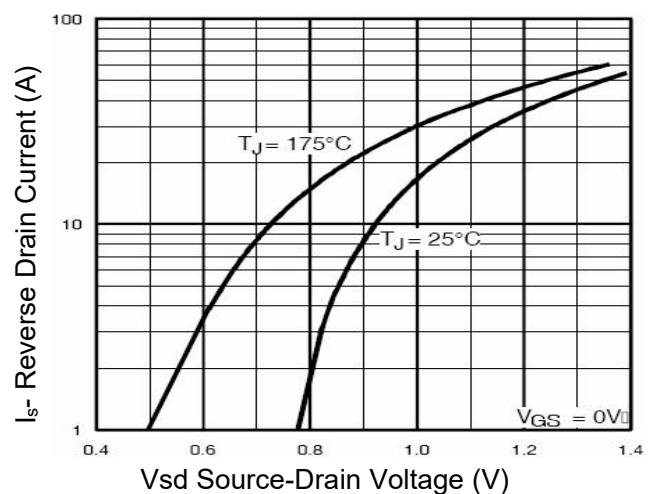


Figure 6 Source- Drain Diode Forward

Typical Characteristics (Continued)

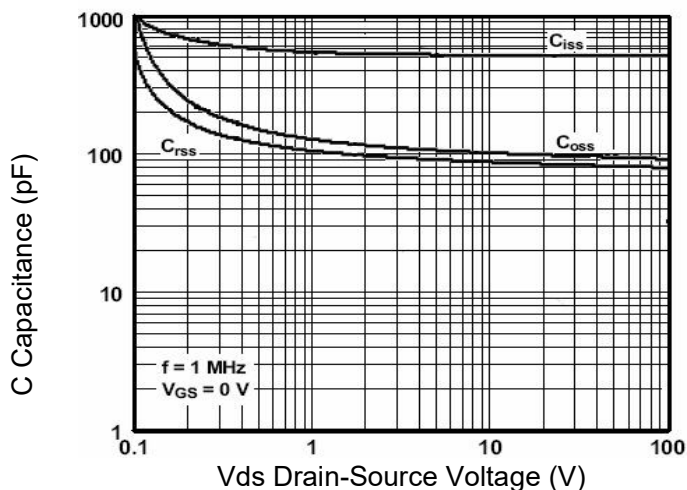


Figure 7 Capacitance vs Vds

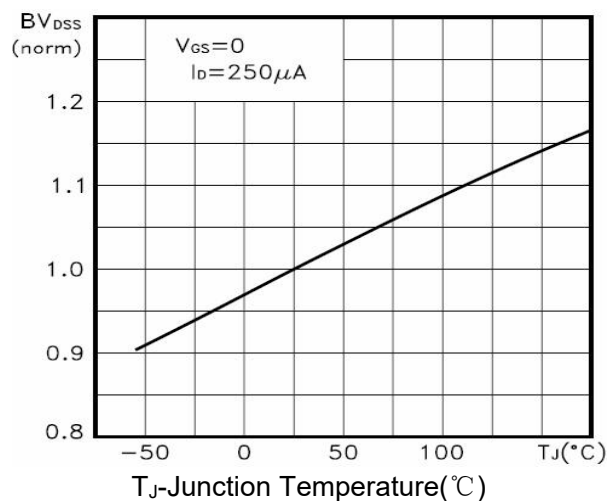


Figure 9 BV_{DSS} vs Junction Temperature

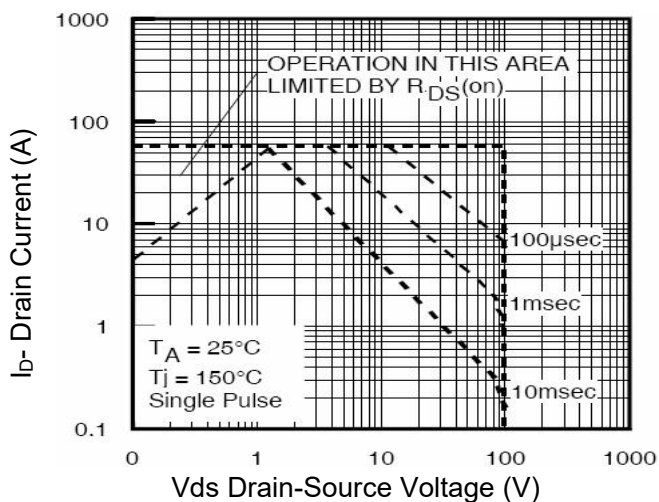


Figure 8 Safe Operation Area

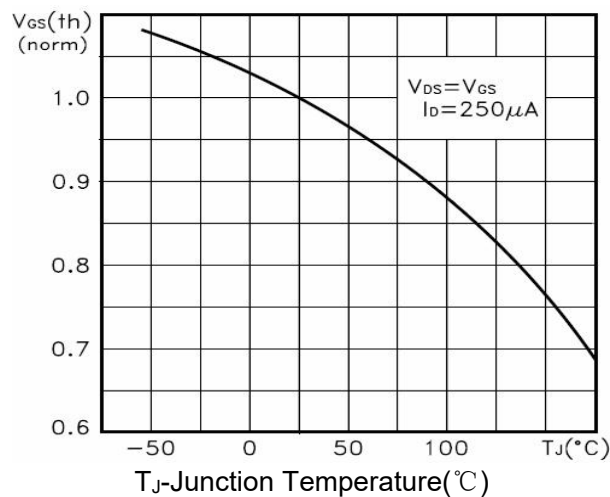


Figure 10 V_{GS(th)} vs Junction Temperature

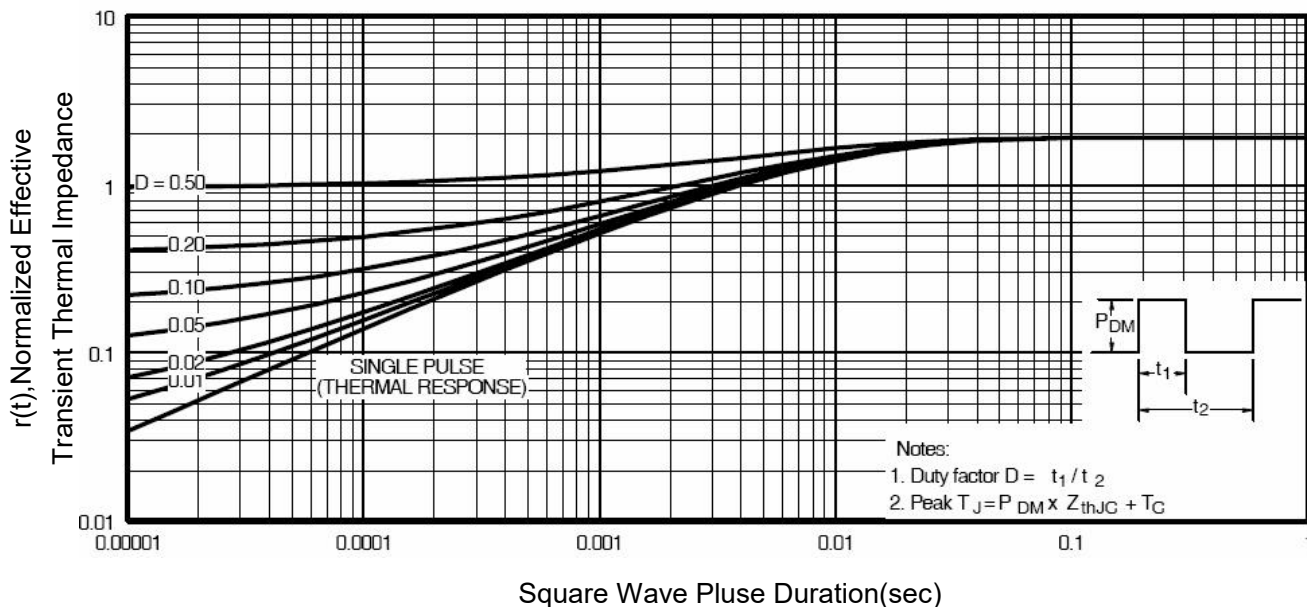
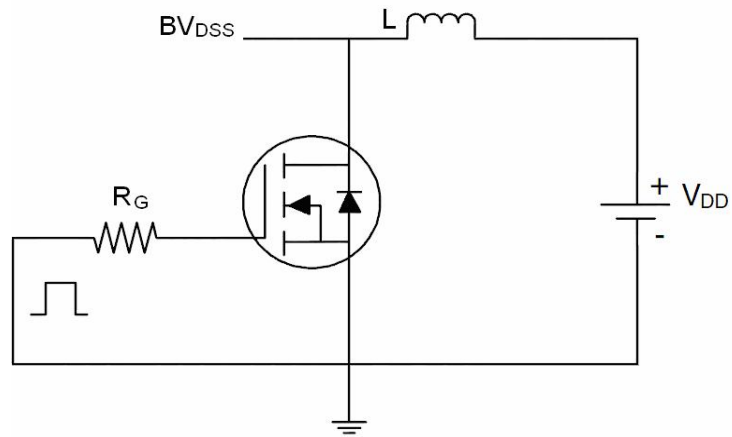


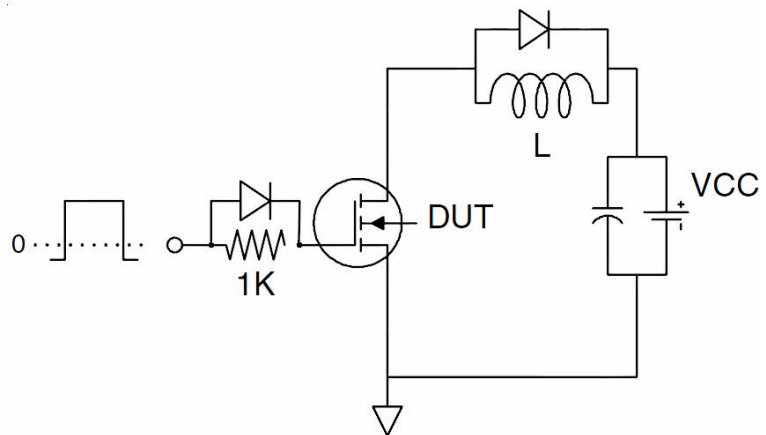
Figure 11 Normalized Maximum Transient Thermal Impedance

Test Circuit

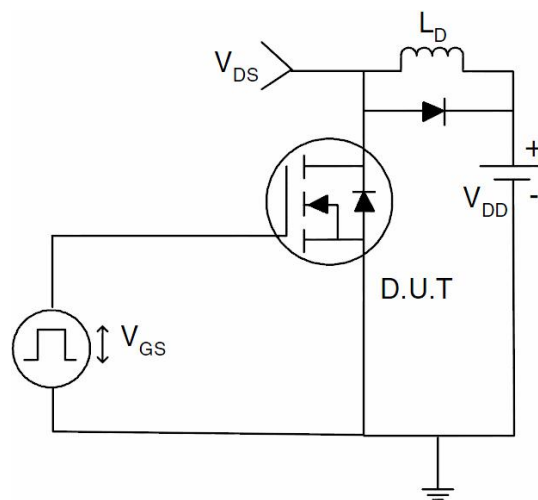
1) E_{AS} test Circuit



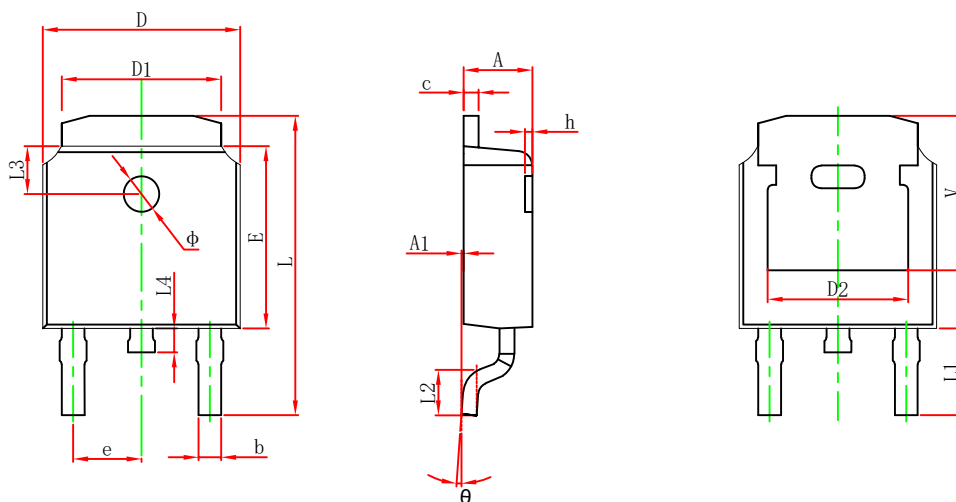
2) Gate charge test Circuit



3) Switch Time Test Circuit

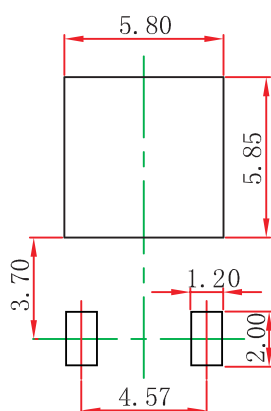


Package Dimension



Symbol	Dimensions In Millimeters		Dimensions In Inches	
	Min.	Max.	Min.	Max.
A	2.200	2.400	0.087	0.094
A1	0.000	0.127	0.000	0.005
b	0.700	0.860	0.025	0.030
c	0.460	0.580	0.018	0.023
D	6.500	6.700	0.256	0.264
D1	5.100	5.460	0.201	0.215
D2	4.830 REF.		0.190 REF.	
E	6.000	6.300	0.236	0.244
e	2.186	2.386	0.086	0.094
L	9.712	10.312	0.382	0.406
L1	2.900 REF.		0.114 REF.	
L2	1.400	1.700	0.055	0.067
L3	1.600 REF.		0.063 REF.	
L4	0.600	1.000	0.024	0.039
Φ	1.100	1.300	0.043	0.051
θ	0°	8°	0°	8°
h	0.000	0.300	0.000	0.012
V	5.250 REF.		0.207 REF.	

TO-252-2L Suggest Pad Layout



NOTE:

1. Controlling dimension: in millimeters.
2. General tolerance: ±0.05mm.
3. The pad layout is for reference purposes only.